

2024 Better Buildings, Better Plants Summit

**Playing in the Sandbox:
Inviting External Collaborators
to Support Climate Goals in the
Public Sector**

Christos Chrysiliou, FAIA, LEED AP
Chief Eco-Sustainability Officer

April 3, 2024



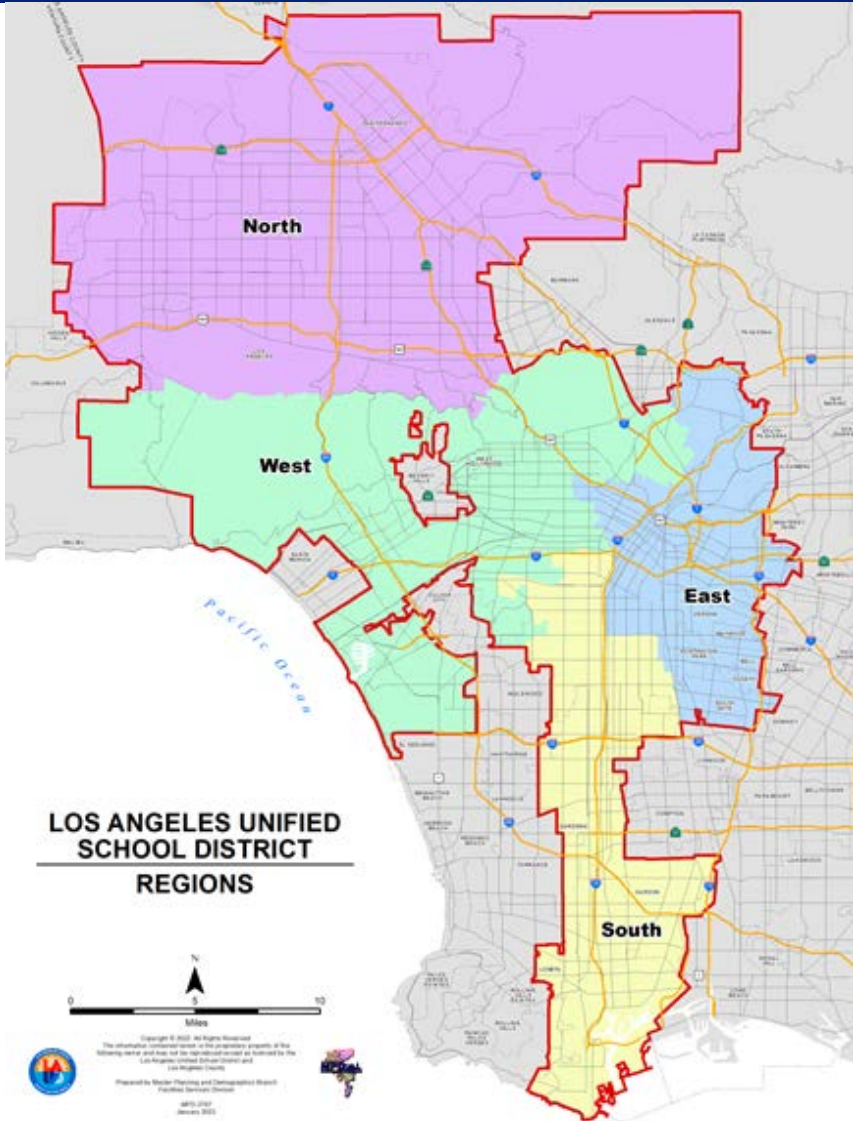


Agenda

- 1** Introductions
- 2** Los Angeles USD Background
- 3** External Collaborations
 - Local / State/ Federal & National
- 4** The Power of Partnerships
- 5** Lessons Learned



LAUSD Facts



92,983,439 building square footage

25,392 structures

31,700 classrooms

6,676 acres of land

1,438 schools and centers, all types

710 square miles of site boundaries

563,083 students (total, all sites)

74,741 employees

Nation's second-largest school district



Mission and Vision

Mission:

The Los Angeles Unified School District is committed to being the most sustainable and environmentally-friendly large urban school district in the country.

Vision:

The Eco-Sustainability Office is committed to supporting the LAUSD Strategic Plan by developing and implementing programs and policies that raise awareness of environmental stewardship and provide healthy, sustainable learning environments for all LAUSD students.



Clean Energy Board Resolution

2040



100% Clean Energy

2030



100% Renewable Energy

2024



20% Energy & Water
Consumption Reduction

2014

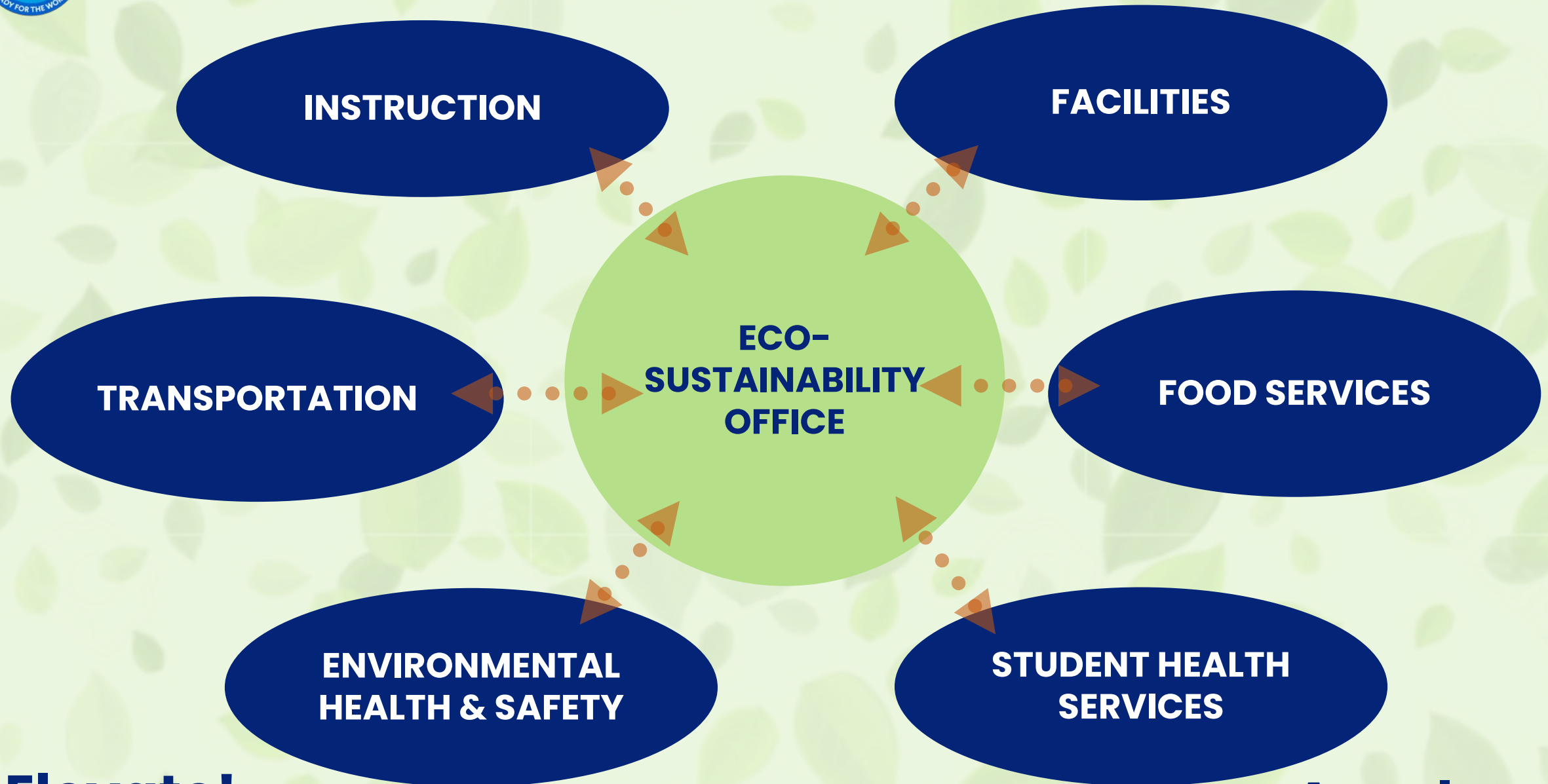
Baseline

Clean Energy Resolution (2019)

- Transitioning LAUSD to 100% Clean, Renewable, Energy Resulting in Healthier Students and More Sustainable, Equitable, Communities
- 100% clean, renewable energy in its electricity sector by **2030**
- 100% clean energy in all energy sectors, including heating, ventilation, air conditioning (HVAC), cooking, and transportation by **2040**



An Integrated Response Across LAUSD Divisions



Elevate!

Accelerate!



Power of Partnerships – Local

- Los Angeles Dept. of Power & Water (LADWP)
- Southern California Edison (SCE)
- Greening Partners (Tree People, Northeast Trees, Thomas Payne Foundation, and more)
- LA County Office of Education (LACOE)
- LA Cleantech Incubator (LACI)

What problems are you trying to solve together?



1. 100% clean, renewable energy in its electricity sector by **2030**
2. Electrifying all energy sectors, including heating, ventilation, air conditioning (HVAC), cooking, and transportation by **2040**
3. Increasing green space on all campuses to a 30% minimum by 2030

How did these partnerships form?

LAUSD is one of the largest utility customers and landowners within the City of Los Angeles.

LAUSD aligned its goals for reducing energy consumption, increasing water conservation, transitioning to all-electric, and reducing reliance on fossil fuels with its local utilities.

Strong partnerships were developed through mutual interest, a collaborative approach, and by fostering strong communication.



Michelle Obama Elementary



Power of Partnerships – State

- Department of the State Architect (DSA)
- California Department of Forestry & Fire Protection (CALFire)
- California Air Resources Board (CARB)
- California Department of Education
- Coalition for Adequate School Housing (CASH)



Solar Array at El Dorado Elementary

What problems are you trying to solve together?



1. 100% clean, renewable energy in its electricity sector by **2030**
2. Electrifying all energy sectors, including heating, ventilation, air conditioning (HVAC), cooking, and transportation by **2040**

How did these partnerships form?

Major construction projects in California must be approved by the DSA.

Traveling to Sacramento for conferences and to advocate for school funding.

Being a priority region for both fire risk and air quality.

Aligning District goals with State goals to take advantage of State grants and funding.



Power of Partnerships – Federal / National

- U.S. Department of Energy (DOE)
- U.S. Environmental Protection Agency (EPA)
- US Green Building Council (USGBC)
- Collaborative for High Performance Schools (CHPS)



What problems are you trying to solve together?



1. Goals for energy/water reduction – 20%
2. Goals for emissions reductions
3. Better Buildings Climate Challenge – 50% reduction by 2030
4. Electrifying LAUSD bus fleet

How did these partnerships form?

Attending events at the federal level.

Establishing relationships and communication with federal employees charged with the California region.

Pursuing federal grants for larger infrastructure projects, especially the Inflation Reduction Act (IRA).

Participating in Better Building Challenge.

Passing Resolutions aligning the District with green building certification programs.



Partnership Strengths

What strengths do partners bring to the table?

- Being responsive to needs by providing financial support through mutually agreed upon programs.
- Providing technical support for emerging technologies
- Funding to offset code compliance when completing energy and water conservation projects (i.e., ADA)

How do these partnerships help break down barriers to project implementation?

- Through mutual trust and open communication
- By aligning our clean energy goals for shared success
- By streamlining the approval process to help support established goals





Collaboration Through Different Phases

Approach with needs that partner is suitable to address and will also help them reach their own goals.

Draft MOUs that both parties can agree on and feel is executable/achievable.

Plan a roadmap for success and establish communication expectations so all parties are on the same page.



Execution Phase

Unified messaging to highlight achievements and celebrate the win.

Debrief with all parties to discuss areas for improvement and lessons learned.

Fold in changes to future partner program offerings.

Establishment Phase



Meet weekly or monthly to review progress, troubleshoot solutions, and pivot if necessary.

Data sharing and open lines of communication are key.

Develop co-branded messaging to foster trust between groups and to show a publicly united front.

Review Phase





Recommendations

Recommendations for School Districts

Create a working relationship with Utility Agencies, State Agencies, Federal Partners to understand their direction, and how your efforts may align.

Focus on fostering win-win opportunities to further the efforts of both organizations.

Attend summits and workshops



Recommendations for Prospective Partners

Communication and trust is key

Build relationships by understanding both sides and sharing common goals.

Establish a process to resolve issues as they arise.

Participate in events and demonstrate support





Lessons Learned

Partnerships Take Time

Bureaucracies often move at their own pace. Being clear about realistic timelines and meeting schedules should be set early.

Being open and transparent by allowing site walks and tours of projects can help ground all goals and expectations in reality.

Be responsive and caring – shared goals foster a sense of camaraderie.



Knowledge Sharing

Each partner brings its own set of expertise to the table. Allow specialists to work together in an integrated framework to reduce misunderstandings and avoid redundant work.

Have all stakeholders meet early and give space for every side to feel heard. This will increase trust and belief that the project will be successful.





Sustainable Growth through Partnerships



Resolutions/Initiatives/Programs

CHPS RESOLUTION (2003)

SAVE the DROP!

APPLIANCE UPGRADES

EMERGING TECHNOLOGY PILOTS

STORMWATER MANAGEMENT

COOL SCHOOLYARDS

DROUGHT AWARENESS
RESOLUTION (2014)

GREEN BUILDING DESIGN

LIGHTING RETROFITS

HEROES for ZERO

BETTER BUILDINGS CHALLENGE

SMART IRRIGATION

WATER SAVINGS RESOLUTION (2010)

ZERO ENERGY
SCHOOLS ACCELERATOR

ENERGY AND RESOURCE
CONSERVATION POLICY (2015)

LAUSD emPOWERED

RECYCLED WATER

SCHOOLYARD HABITATS

EV CHARGING POLICY
(2018)

SOLAR INITIATIVE

STUDENT ENERGY
AUDIT TRAINING (SEAT)

PLUMBING RETROFITS

PRESERVING & SUSTAINING
SCHOOL GARDENS (2007)

SOLAR POWER RESOLUTION (2008)

PROP 39 ENERGY UPGRADES

DROPS

SEEDS GARDENS

NATURE EXPLORE CLASSROOMS



Partnerships

U.S. DEPARTMENT OF EDUCATION
GreenRibbonSchools



Caltech

nbi new buildings institute





Thank You!



Christos Chrysiliou, FAIA, LEED AP
Chief Eco-Sustainability Officer



Please visit us at:
lausd.org/eso

